

The Game of SWITCHBOARD™

a compelling mix of chaos, strategy, and convenient alliances

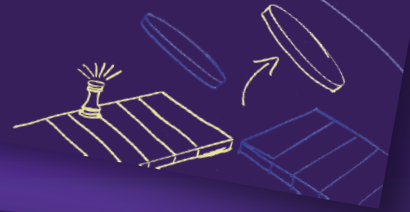
The objective seems simple...
Be the first to get all your pawns home.

The Game of SWITCHBOARD™



Every piece of the board moves...
Use this to your advantage, but watch out
for your competition!

The Game of SWITCHBOARD™



Land on unprotected pawns to send them
back to their Start Tile.

The Game of SWITCHBOARD™



Mass your pawns on a single tile
to repel an attack.

The Game of SWITCHBOARD™



Use Action Cards to enhance your strategy
and movements.

Switch Tile
of
Same Pattern

The Game of SWITCHBOARD™

Rotate
1 Walkway

Switch 2 Home Tiles

Age 8 - Adult

2 - 8 Players

Single Player
or Team Cooperative

Play Time: (4 Players)
30 - 40 Minutes

TheGameOfSwitchboard.com

